

# Unit 1

## Lesson 1 Pinyin, Basic Strokes 拼音、基本笔画

Text 1



① Vowels:

a o e i u ü

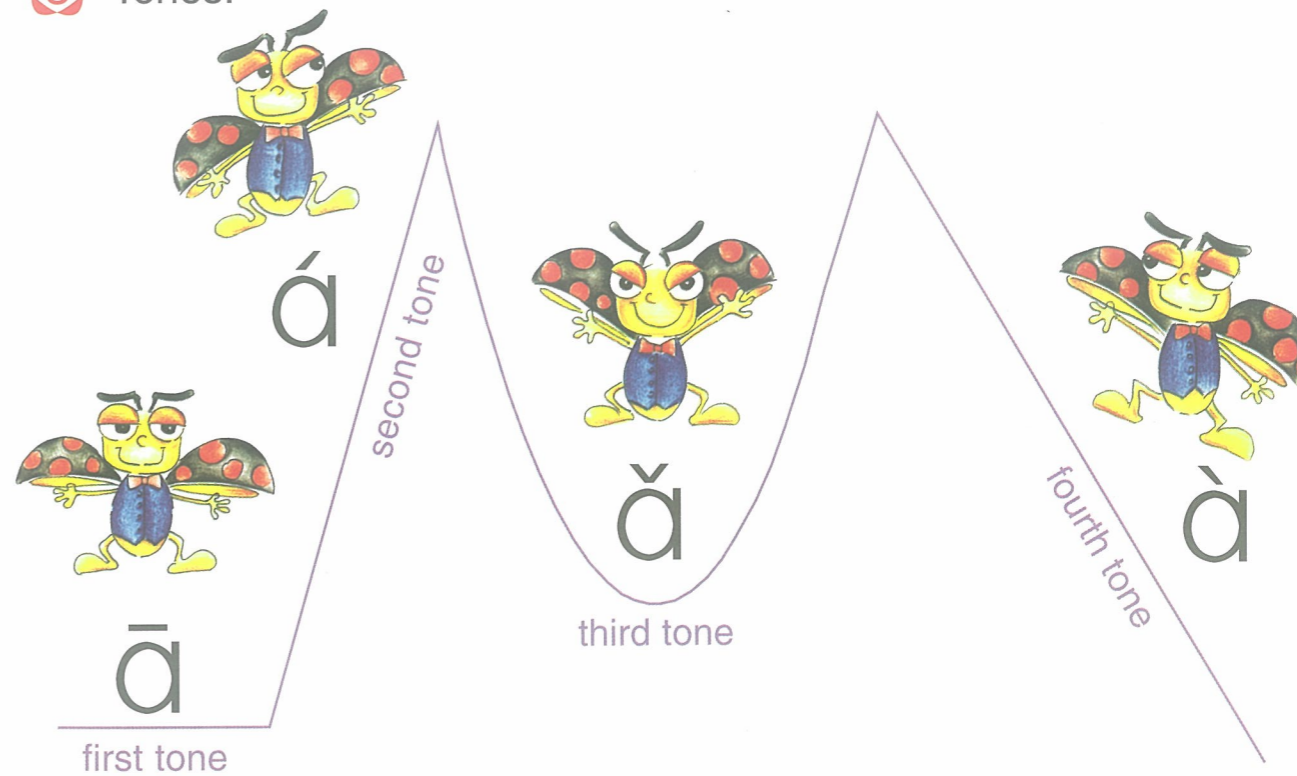


② Consonants:

b p m f  
d t n l  
g k h  
j q x  
zh ch sh r  
z c s y w



③ Tones:



1 Read aloud.

1 ā á ǎ à

2 ō ó ǒ ò

3 ē é ě è

4 ī í ǐ ì

5 ū ú ǔ ù

6 ū ú ǔ ù



2 Listen and circle the correct pinyin.

1 ā à

5 é è

2 ó ǒ

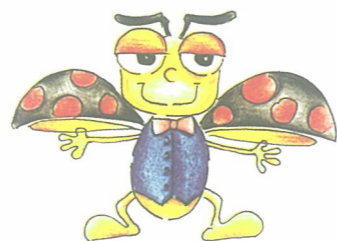
6 ù ú

3 ī í

7 ī ū

4 ǔ ù

8 ó é



3 Group work. Try to pronounce them correctly.

1 bā bá bǎ bà

2 bō bó bǒ bò

3 mī mí mǐ mì

4 fū fú fǔ fù

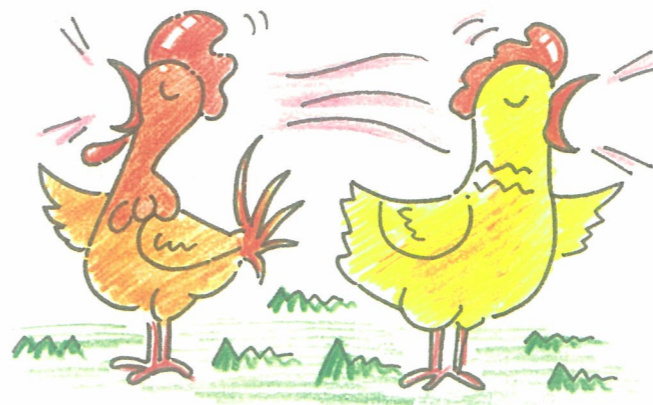


Practice Focus

b p m f

Text 2

Basic Strokes



1. 2.

diǎn héng

3. 4.

shù piě

5. 6. 7. 8.

nà tí zhé gōu

4 Name the highlighted stroke of each character.

1.

diǎn

2.

3.

4.

5.

6.

7.

8.

9.

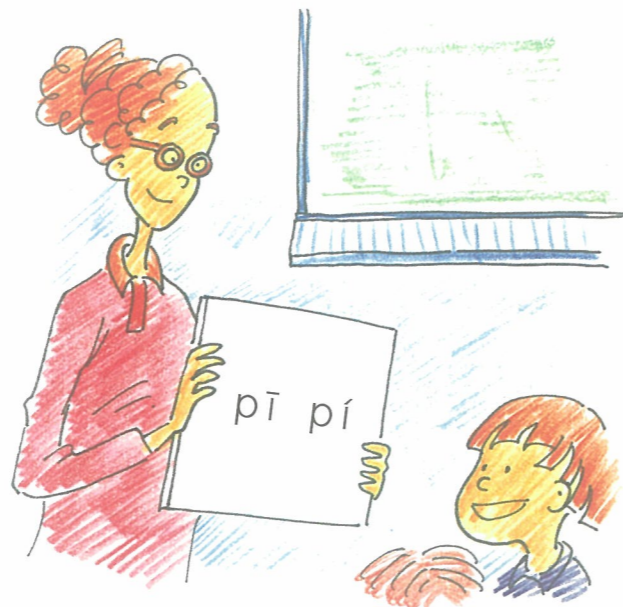
10.



5 Listen and circle the correct pinyin.



- 1 pī pí
- 2 mǔ mú
- 3 fǎ fà
- 4 bǐ bì
- 5 pó pò
- 6 bù pù
- 7 mī mí
- 8 bà bǎ



- 9 mā mà
- 10 fù fú

6 Group work. Try to pronounce them correctly.

- |           |           |
|-----------|-----------|
| 1. bàba   | 7. shāzi  |
| 2. yéye   | 8. lǐzi   |
| 3. māma   | 9. gūgu   |
| 4. dìdi   | 10. bízi  |
| 5. shūshu | 11. dízi  |
| 6. lǎba   | 12. shīzi |

**NOTE**

1. The tonal marks are placed on the vowels, e.g. bà mǔ









2. Some words have neutral tones, so no tonal marks are needed, e.g. bàba māma

7 Listen and add a tonal mark to the pinyin.



- |        |        |        |
|--------|--------|--------|
| 1. bà  | 2. bu  | 3. bi  |
| 4. pi  | 5. pa  | 6. mu  |
| 7. mo  | 8. mi  | 9. pu  |
| 10. fa | 11. fu | 12. bo |

8 Name each stroke.

- |  |  |  |  |
|--|--|--|--|
| 1. <br>héng | 2.   | 3.   | 4.   |
| 5.          | 6.  | 7.  | 8.  |

9 Listen and write down the pinyin with tonal marks.



- |       |    |    |
|-------|----|----|
| 1. pī | 2. | 3. |
| 4.    | 5. | 6. |
| 7.    | 8. | 9. |

